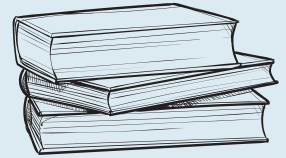
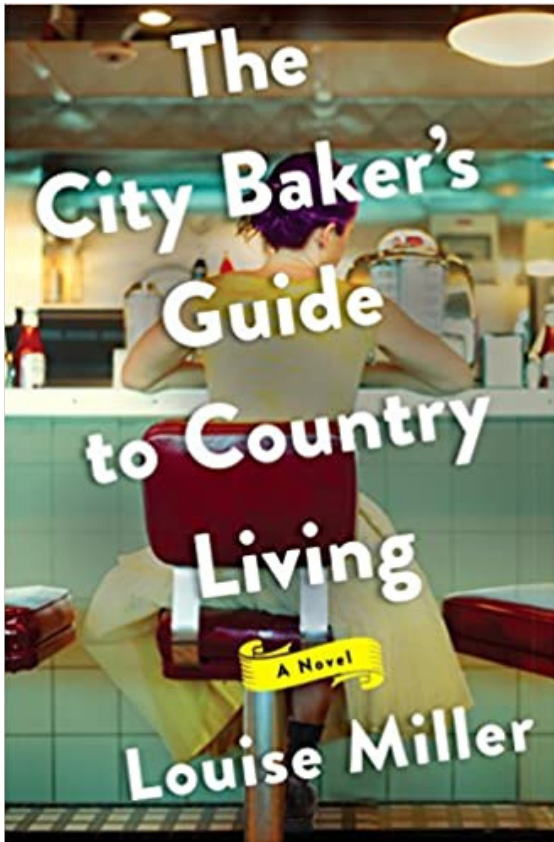


BOOK TALKS



Geek out about books with Erin & Emily

December 2020
Issue. 1



WINTER 2020/21

DECEMBER
The City Baker's Guide to Country Living
Louise Miller

JANUARY
A Court of Thorns and Roses
Sarah J. Maas

FEBRUARY
Garden Spells
Sarah Addison Allen

The City Baker's Guide to Country Living

Louise Miller

A full-hearted novel about a big-city baker who discovers the true meaning of home—and that sometimes the best things are found when you didn't even know you were looking.

When Olivia Rawlings—pastry chef extraordinaire for an exclusive Boston dinner club—sets not just her flambéed dessert but the entire building alight, she escapes to the most comforting place she can think of—the idyllic town of Guthrie, Vermont, home of Bag Balm, the country's longest-running contra dance, and her best friend Hannah. But the getaway turns into something more lasting when Margaret Hurley, the cantankerous, sweater-set-wearing owner of the Sugar Maple Inn, offers Livvy a job. Broke and knowing that her days at the club are numbered, Livvy accepts...

HOW TO GET A COPY:

Check out a physical book from our Cadillac or Manton branches

HOW TO PARTICIPATE:

Like the library's Facebook page & join our CWPL Book Talks group

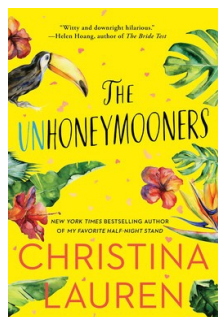
Facebook Live event
Thursday January 7th,
7:15pm

COZY
UP
WITH
A
GOOD
BOOK



fold both ways along the dotted line & tear for a free bookmark!

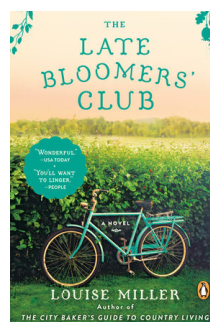
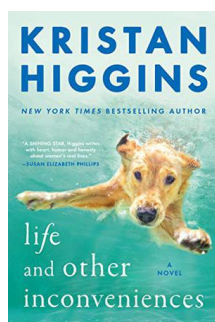
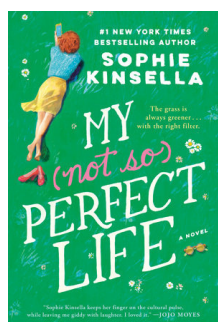
READ-A-LIKES



The Unhoneymooners
Christina Lauren

When We Found Home
Susan Mallery

One Plus One
JoJo Moyes



My (not so) Perfect Life
Sophie Kinsella

Life and Other Inconveniences
Kristan Higgins

The Late Bloomer's Club
Louise Miller

The City Baker's Guide to Country Living

intro discussion questions

1. Food and its role in tradition, community, and family is a theme that is threaded throughout the story. What are the culinary traditions in your family? Discuss how food can be an equalizer—among friends, enemies, strangers, etc.
2. There are many unconventional families who appear in *The City Baker*—from Margaret's relationship to the McCrackens to the staff at The Sugar Maple to Livvy's relationship to Hannah to Livvy and Margaret's relationship to each other. How do you define family? Do you have a chosen family as well as your birth family? Do you have people in your life whom you consider family who are not technically related to you?
3. Margaret and Dottie have been lifelong friends. How do you think their friendship evolved during that time? Have you had friendships that have spanned decades? How have they changed? How have they stayed the same?

YOU MIGHT ALSO ENJOY:

DIY ornament craft kits for teens & adults available via request through December 23rd

Create a warm holiday message for our local seniors at Samaritas & Green Acres! Pick up a free kit through our curbside service beginning December 8th

Watch for our upcoming Wexford Voices Community Journal Project